

# Operating Table Accessories Catalogue

1. GENERAL ACCESSORIES
2. ARM SUPPORT
3. LEG SUPPORT
4. HEAD SUPPORT
5. BODY SUPPORT
6. GYNECOLOGY/UROLOGY



## GENERAL ACCESSORIES

### Clamp for round bar

A clamp of  $\varnothing$  16mm in diameter with strong fixing power.

Diameter:  $\varnothing$  16mm

08-117-11	for EU side rail
08-117-09	for US side rail



### Clamp for flat bar

08-117-13	for EU side rail
08-117-10	for US side rail



### Anesthesia screen L type with clamp

08-062-00-R2	for EU side rail
08-062-00-R1	for US side rail

\* Clamp for round bar is included.



### Anesthesia screen with wing type

Spread of a cover sheet can be adjusted by the auxiliary bars.

08-061-20-UE	Anesthesia screen with wing type
--------------	----------------------------------

\* Clamp for flat bar must be ordered separately



## Instrument tray

Tray dimensions: W240 x L340 x D24 (mm)

08-097-00-UE	Instrument tray
--------------	-----------------

\* Clamp for round bar must be ordered separately.



## Adjustable instrument tray

Instrument tray dimensions: W350 x D500 (mm)

08-098-01-NC	Adjustable instrument tray
--------------	----------------------------

\* Clamp for round bar must be ordered separately.



## Radiographic tops

08-088-10-UE	for 3502 series
08-089-10-UE	for 3602 series
08-089-11-UE	for 6702 series
08-089-12-UE	for 6302 series



## Adjustable cassette tray

Various cassettes can be used by adjusting width of the tray.  
The handle is scaled to recognize the insertion position.  
The handle can be removed.

08-095-50-UE	Adjustable cassette tray
08-091-00	Cassette tray (390 x 315 mm)
08-092-00	Cassette tray (339 x 288 mm)
08-093-00	Cassette tray (390 x 390 mm)
08-094-00	Cassette tray (390 x 466 mm)



## Lateral cassette holder

Films can be held during X-ray photography from the side.

08-089-03-NC Lateral cassette holder

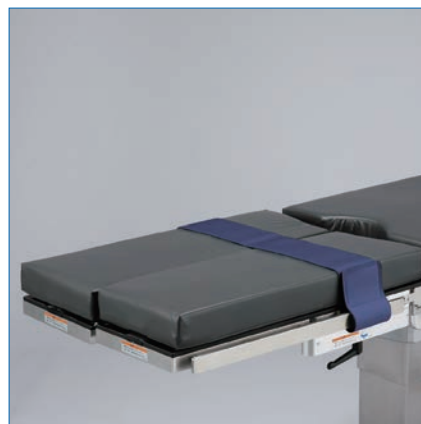
\* Clamp for flat bar must be ordered separately.



## Body strap

The body strap is used for holding or fixing a patient's trunk or legs.  
Strap dimensions: W100 x L1700 (mm)

08-084-02 Body strap (1700 mm)



## Accessory cart

The Accessory cart has a built in side rail to hold various accessories and easily moves from storage to the operating theatre.

08-081-01 Accessory cart



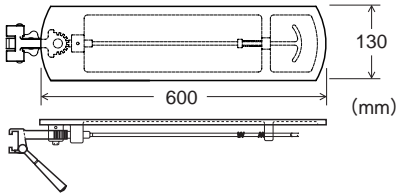
ARM SUPPORT

Armboard

Armboard dimensions: W130 x L600 (mm)

08-117-16	for EU side rail
08-117-06	for US side rail

08-117-07	60 mm Pad for armboard
08-117-08	100 mm Pad for armboard

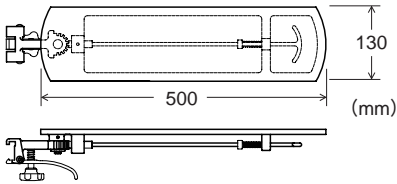


Locking type armboard

Armboard securely locks to side rail and will not slip during table articulation.  
Armboard dimensions: W130 x L500 (mm)  
\* A mattress is sold separately.

08-065-85	for EU side rail
08-065-80	for US side rail

08-065-40	60 mm Pad for armboard
08-065-45	100 mm Pad for armboard



Raised armboard

Raised Armboard adjusts to accommodate all mattress thicknesses, x-ray tops and varied patient size.  
Armboard dimensions: W120 x L400 (mm)

08-066-10-UE	Raised armboard
--------------	-----------------

\* Clamp for round bar must be ordered separately.



Armboard for prone position

The armboard holds patient's arms and hands in prone position.  
Armboard dimensions: W120 x L400 (mm)  
\* No mattress.

08-066-05-NC	Armboard for prone position
--------------	-----------------------------

\* Clamp for round bar must be ordered separately.

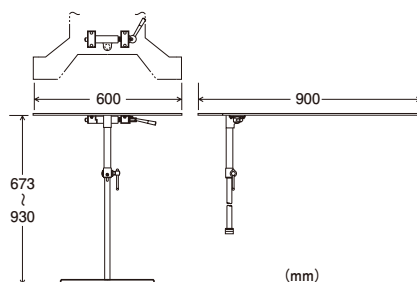


## Radiolucent acylic armboard

Armboard slides under table mattress and is held in place by patient weight and support rod. Folds easily for storage.

\* No mattress.

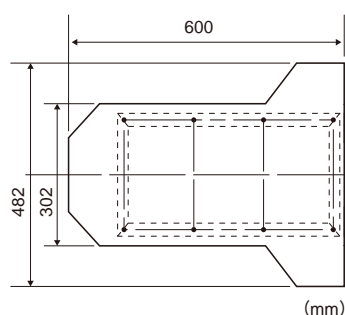
03-001-74	Radiolucent acylic armboard
-----------	-----------------------------



## Arm surgery board with side rail mount

\* No mattress.

08-086-05-C2	for EU side rail
08-086-05-C1	for US side rail



## Arm shield

The arm shields prevent patient's arms from falling down from the operating table and keep them in proper position.

Dimensions: 25 x 180 x 400 (mm)

08-086-07	Arm shield
08-069-18	Pad for Arm shield



## Wrist strap (240 mm)

The wrist strap can be used by being bent for patient's lower arms.

\* A cover is included with shipment.

08-079-00-R2	for EU side rail
08-079-00-R1	for US side rail

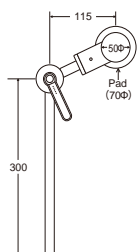


## Upper arm support

The upper arm support can adjust fixing location of a patient's arm freely with a joint attached.

\* A cover is included with shipment.

08-064-03-NC	Upper arm support
--------------	-------------------



## Lower armboard

The armboard supports park bench position with the armboard for prone position.

Armboard dimensions: W120 x L400 (mm)

\* A mattress is included with shipment.

08-086-15-R2	for EU side rail
--------------	------------------

08-086-15-R1	for US side rail
--------------	------------------

\* Clamp for round bar must be included.



## LEG SUPPORT

### Knee crutches

Dimensions: W134 x H720 x D220 (mm)

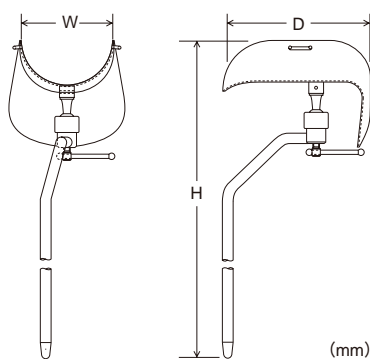
08-070-00-UE	Knee crutches
--------------	---------------

\* 2 Clamps for round bar must be ordered separately.

\* Delivery comprises 2 pieces.

08-070-13	Urethane pad for Knee crutches
-----------	--------------------------------

\* Delivery comprises 2 pieces.



### Foot rests

08-071-01	Foot rests
-----------	------------

\* 2 Clamps for flat bar must be ordered separately.

\* Delivery comprises 2 pieces.

\* No mattress



## Leg plate

The leg plate holds legs when operating a hip joint in a lateral position.  
Lifting and lowering amount: 270 (mm)

08-078-20-R2	for EU side rail
08-078-20-R1	for US side rail



## HEAD SUPPORT

### Head supporter

The Head Supporter reduces superfluous load on the neck by providing adjustable circumferential support of the head.

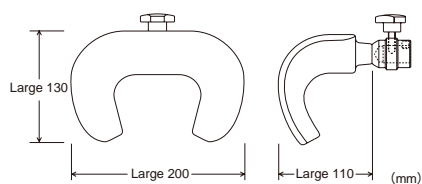
08-075-06-R2	for EU side rail
08-075-06-R1	for US side rail



### M-type head frame support with U-shaped head rest and table attachment, Large

Location of this part is adjusted easily due to the spherical joint on the arm.

07-952-00	Table attachment
08-073-03	U-shaped head rest, L

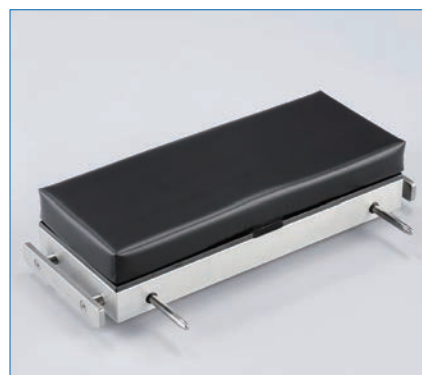


### Head extension

Head extension dimensions: W240 x L500 (mm)

08-075-28-R2	for EU side rail
08-075-28-R1	for US side rail

08-075-23	Radiographic top for Head extension
08-075-29	70 mm Pad for Head extension



## BODY SUPPORT

### Chest & waist support

Combination of a spherical joint and an end joint can keep the patient's body position where operative field is not obstructed.

Pad dimensions: W165 x L65 (mm)

08-069-15-UE	Chest & waist support
08-069-26-NC	Radiographic Chest & waist support

- \* Clamp for flat bar must be ordered separately.
- \* Delivery comprises 1 piece.



### Table side extension

The table side extension extends the width of an operating table by attaching to the side rail of the operating table.

Table side extension dimensions: W85 x L380 (mm)

\* A mattress is included with shipment.

08-086-06-R2	for EU side rail
08-086-06-R1	for US side rail

08-086-33	70 mm Pad for Table side extension
08-086-35	110 mm Pad for Table side extension



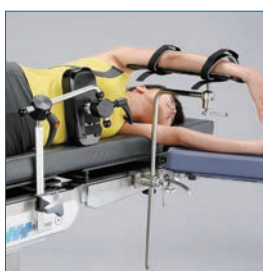
### Lateral support

Lateral Supports provide a wide range of adjustment to accommodate all patient sizes for secure support in the lateral position.

Pad dimensions: W220 x L90 (mm)

08-069-24-NC	Lateral support
--------------	-----------------

- \* Clamp for flat bar must be ordered separately.
- \* Delivery comprises 1 piece.



### Adjustable body support

The adjustable body support can be fixed or unfixed easily with just a single touch by hydraulic pressure. A patient is securely held when rotating extremely.

Pad dimensions: W160 x L120 (mm)

08-080-11-NC	Adjustable body support
--------------	-------------------------

- \* Clamp for round bar must be ordered separately.
- \* Delivery comprises 1 piece.



## Pubis support

The pubis support supports a patient's pubis.

Pad dimensions: W90 x L70 (mm)

08-078-32-NC	Pubis support
--------------	---------------

\* Clamp for round bar must be ordered separately.



## GYNECOLOGY/UROLOGY

### Great White Platinum Stirrup

Free-floating boot design and soft pads reduce the risk of superficial nerve injury associated with long lithotomy operations. Precise positioning is easily controlled by a single person with the advanced trigger grip levers.

Lithotomy and length indicators assist quick and safe positioning up to 272 kg.

08-070-50-NC	Great White Platinum Stirrups
--------------	-------------------------------



### Transfer board

The light weight Transfer Board is used in place of the table leg section to facilitate patient transfer and anesthesia induction for lithotomy procedures.

4-030-22	Transfer Board
----------	----------------





Distributed By:



30031 Ahern Avenue Union City, CA 94587-1234 / USA  
Telephone: 510-429-1500  
Toll Free: 800-777-4674  
Outside USA: +1 510-429-1500  
Fax: 510-429-8500  
[www.mizuhosi.com](http://www.mizuhosi.com) / [www.newhipnews.com](http://www.newhipnews.com)

2015 ©Mizuho OSI

NW0846 REV A



Mizuho Ikakogyo Co., Ltd  
3-30-13 Hongo, Bunkyo-ku  
Tokyo 113-0033 Japan  
Tel: +81-3-3815-3194



Emergo Europe  
Molenstaat 15, 2513BH  
The Hague, The Netherlands  
Tel: (31) (0) 70 345-8570  
Fax: (31) (0) 70 646-7299